

**Grafer om förekomst av:  
salmonellainfektion  
resultat från salmonellakontrollprogrammet,  
campylobacter- och listeriainfektion  
hos djur och människa fram till 2004.**

Källa:

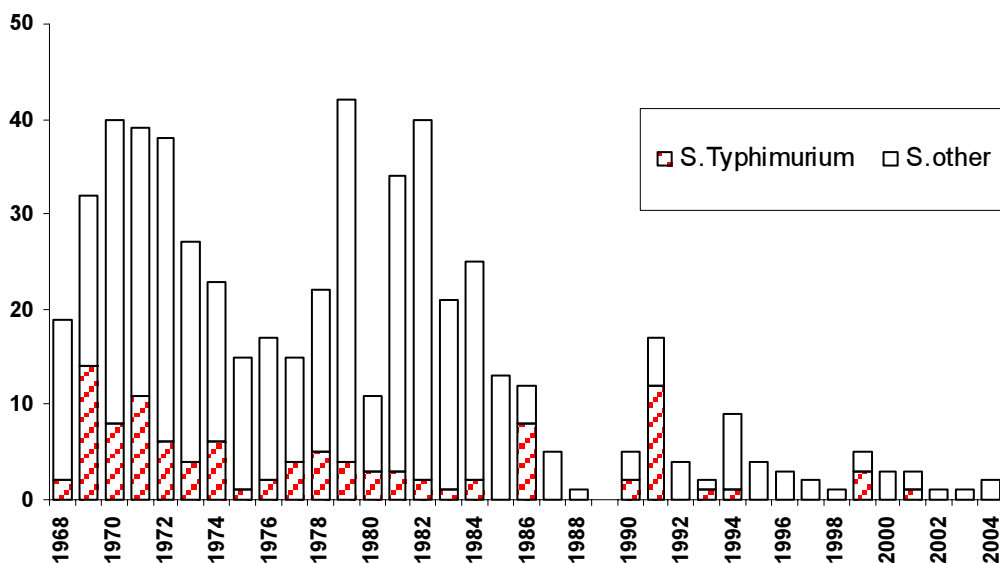
Statens veterinärmedicinska anstalt (SVA)

Smittskyddsinstitutet (SMI)

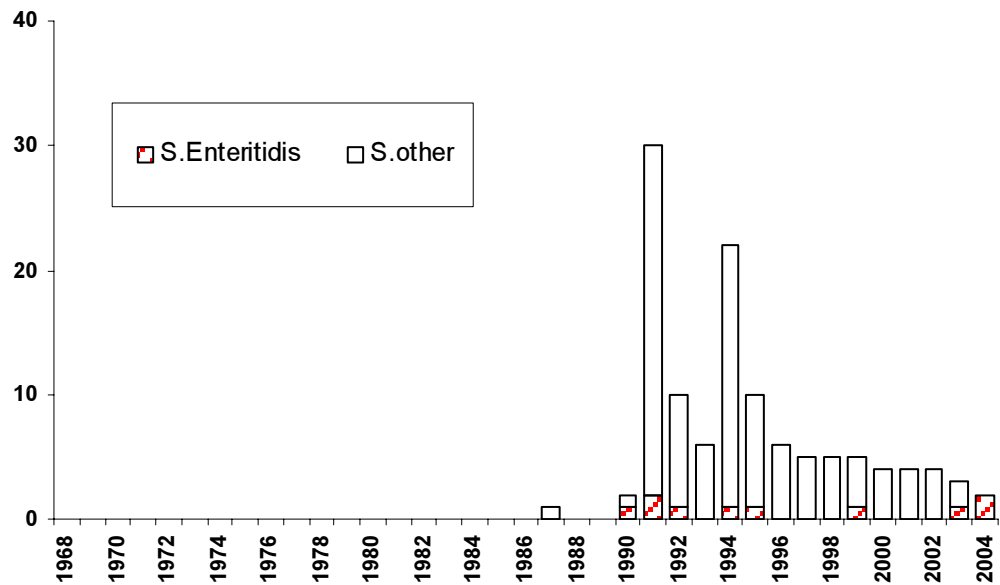
Jordbruksverket (SJV)

Livsmedelsverket (SLV)

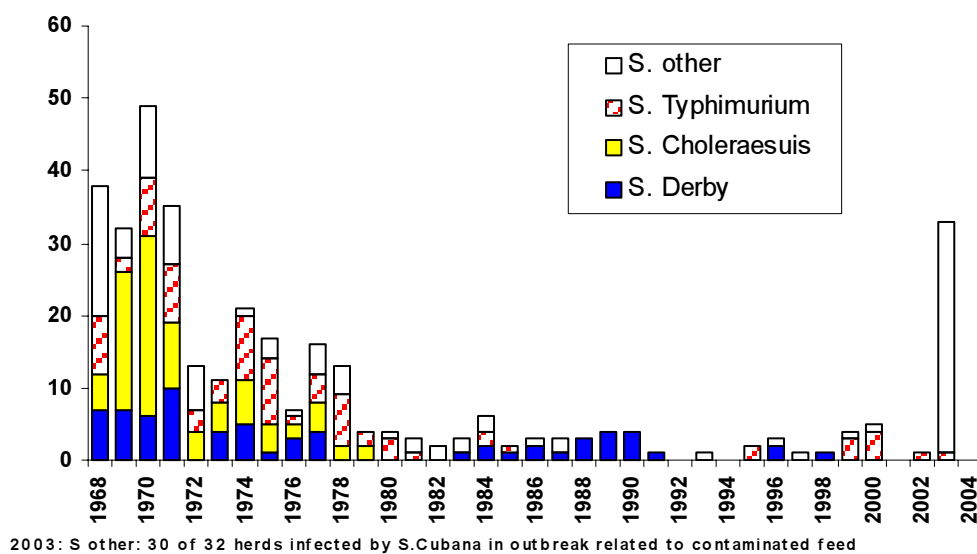
**Fig 1.1. Number of notified cases (infected herds) of *Salmonella* in broilers, 1968-2004**



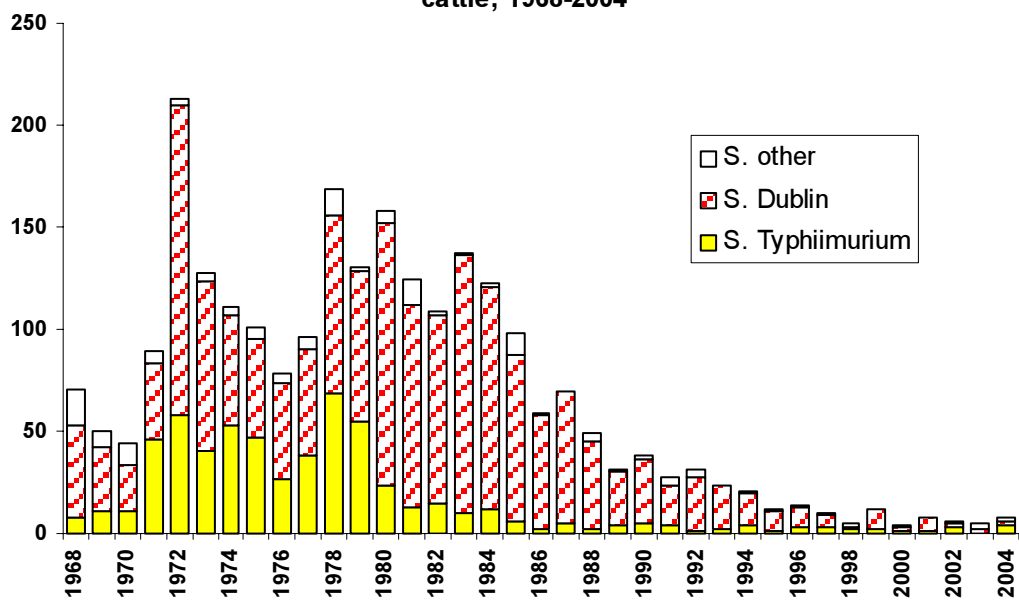
**Fig 1.2. Number of notified cases (infected herds) of *Salmonella* in layers, 1968-2004**



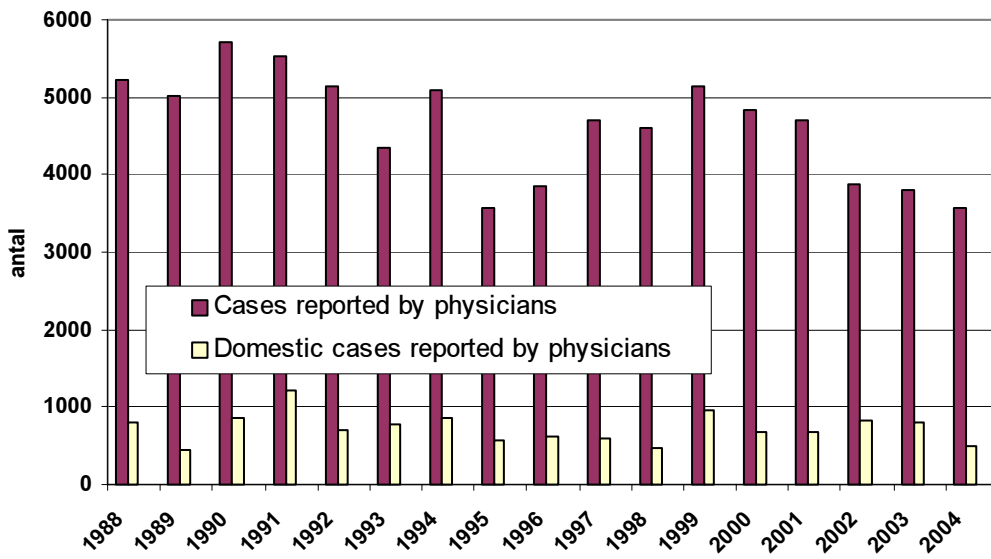
**Fig 1.3. Number of notified cases (infected herds) of *Salmonella* in pigs, 1968-2004**



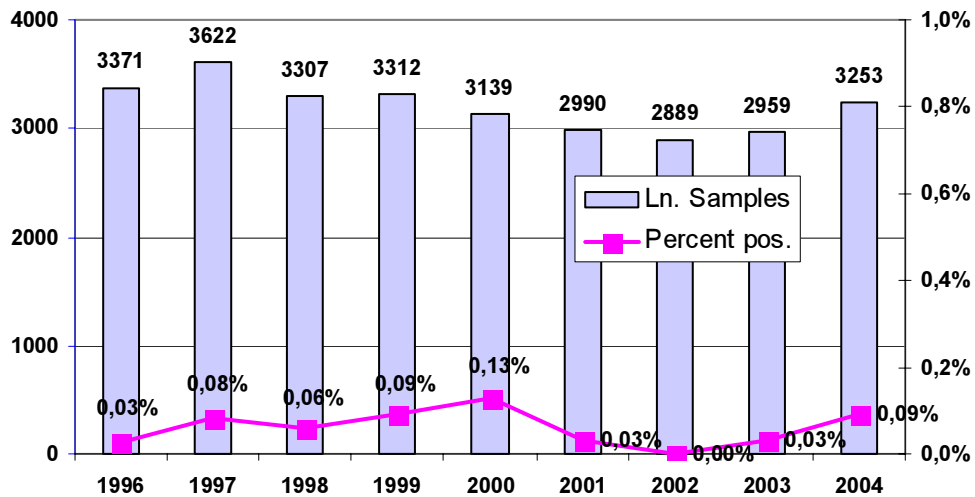
**Fig 1.4. Number of notified cases (infected herds) of *Salmonella* in cattle, 1968-2004**



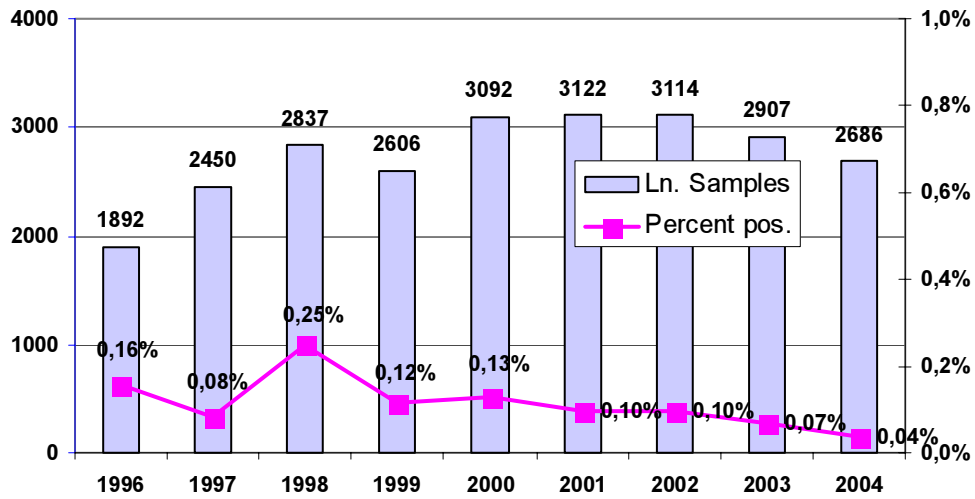
**Figure 1.5. Number of cases of salmonellosis in humans, 1988 - 2004**



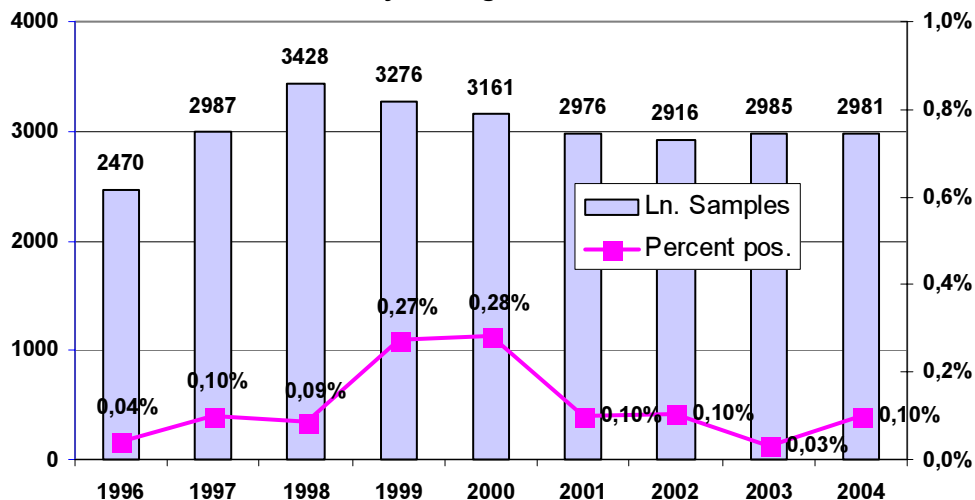
**Fig 1.6. Salmonella control of cattle, lymph nodes sampled at major slaughter-houses**



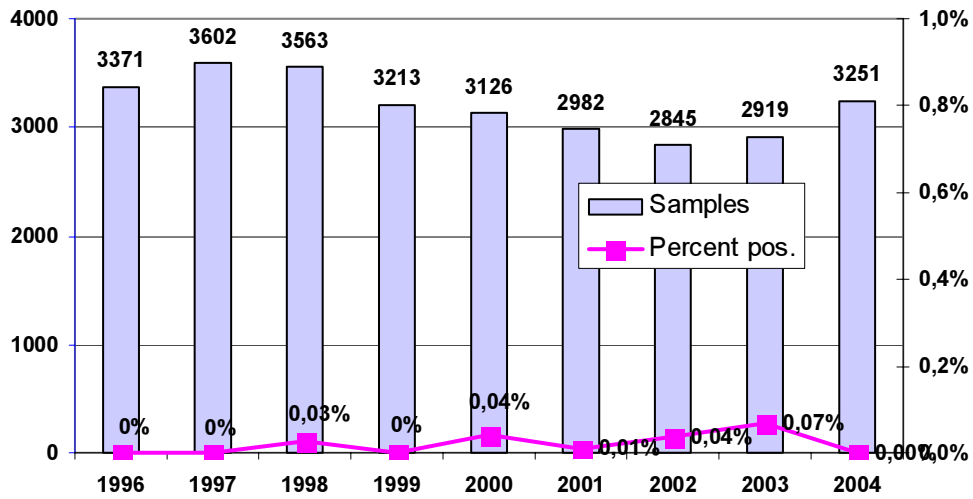
**Fig 1.7. Salmonella control of adult pigs, lymph nodes sampled at major slaughter-houses**



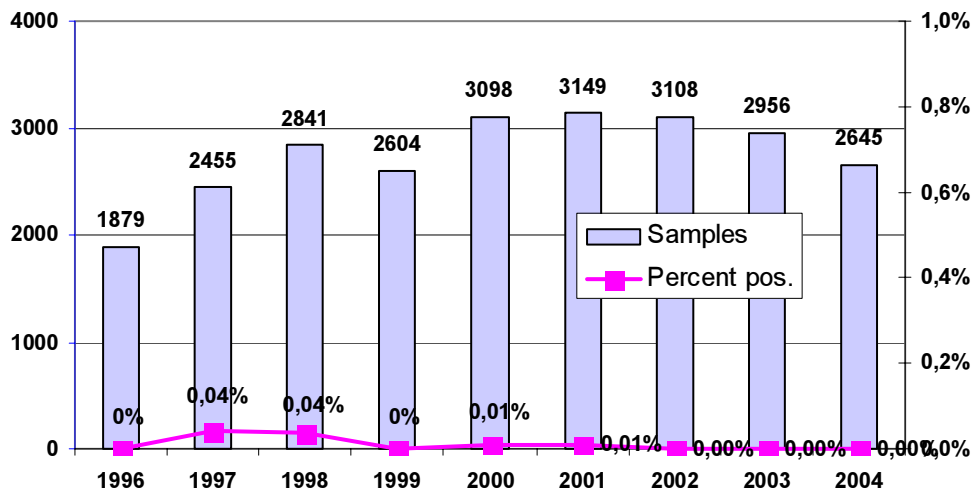
**Fig 1.8. Salmonella control fattening pigs, lymph nodes sampled at major slaughter-houses**



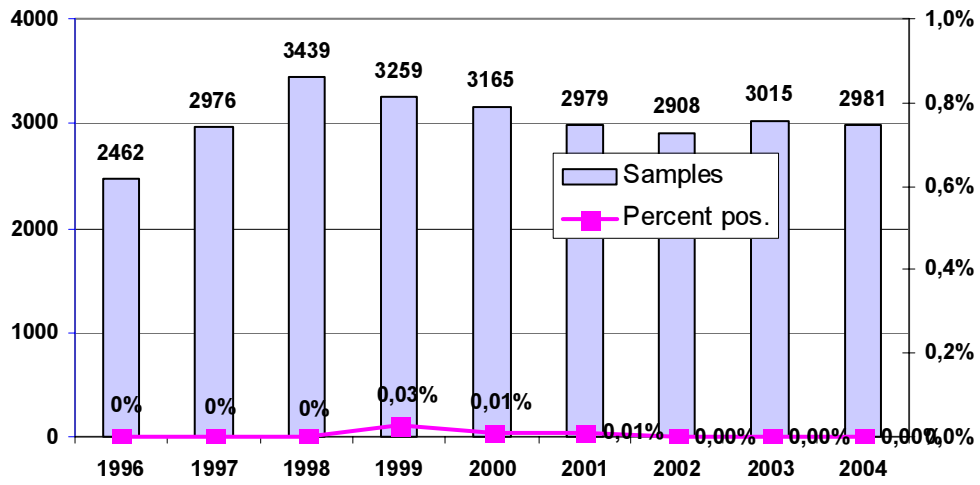
**Fig 1.9. Salmonella control of cattle, swabs sampled at major slaughter-houses**



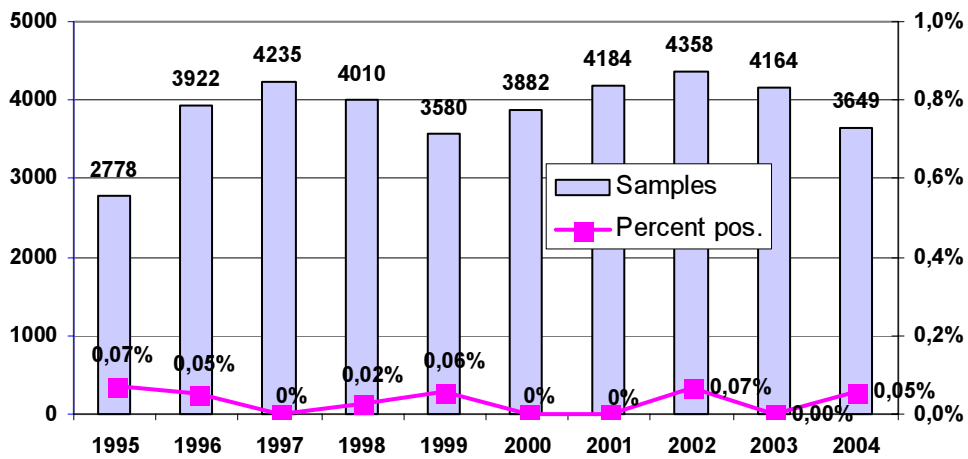
**Fig 1.10. Salmonella control of adult pigs, swabs sampled at major slaughter-houses**



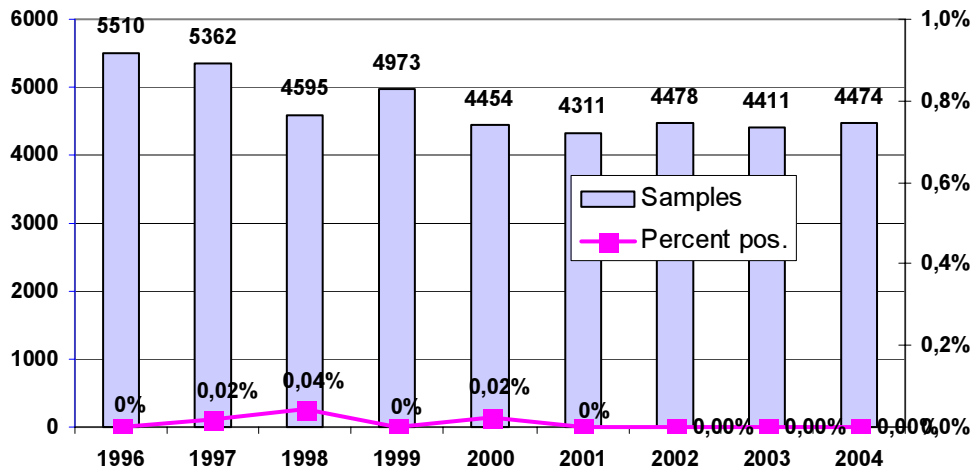
**Fig 1.11. Salmonella control of fattening pigs, swabs sampled at major slaughter-houses**



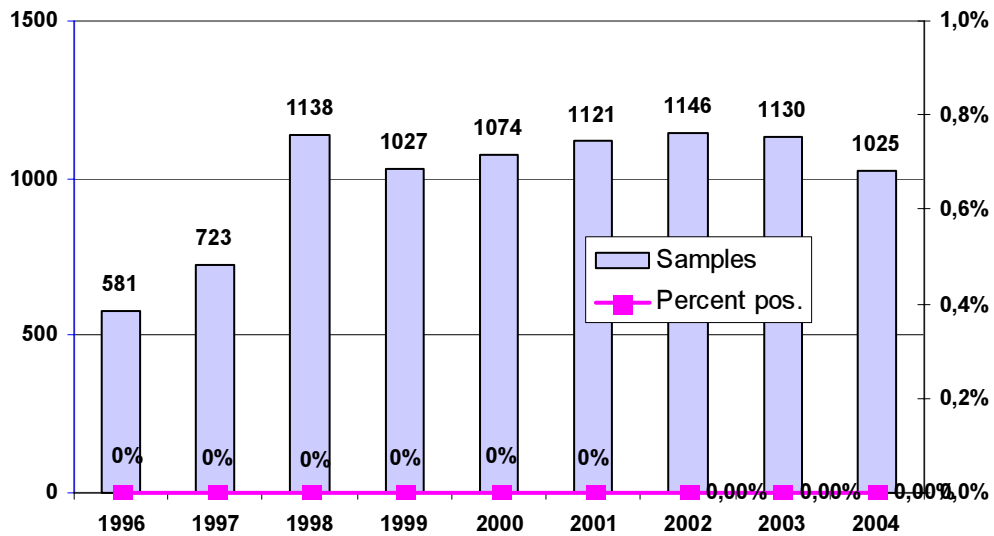
**Fig 1.12. Salmonella control of poultry at major slaughter-houses**



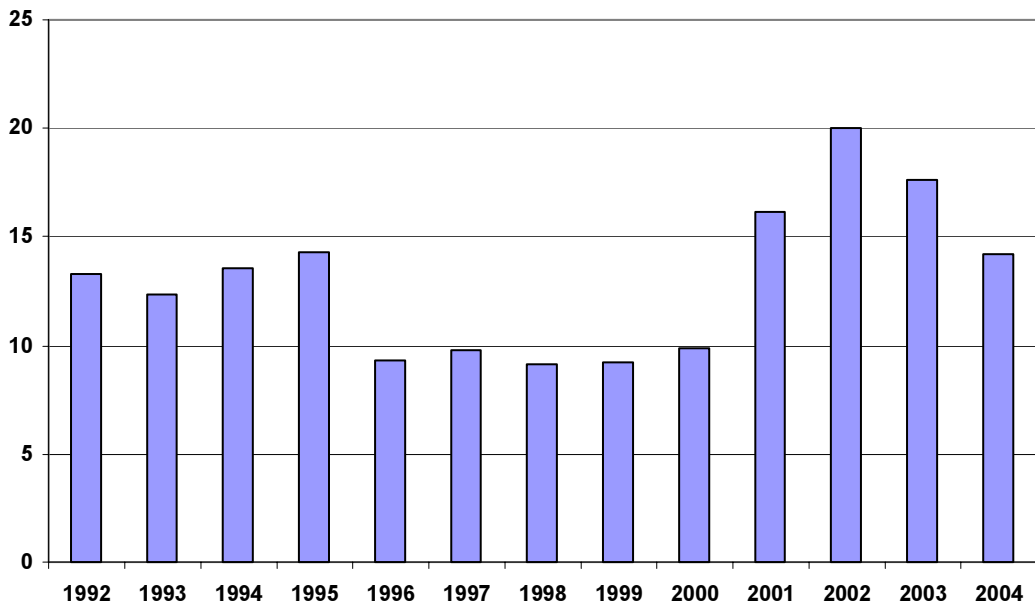
**Fig 1.13. Salmonella crushed meat/scraping (beef, pork)  
at cutting plants supervised by NFA**



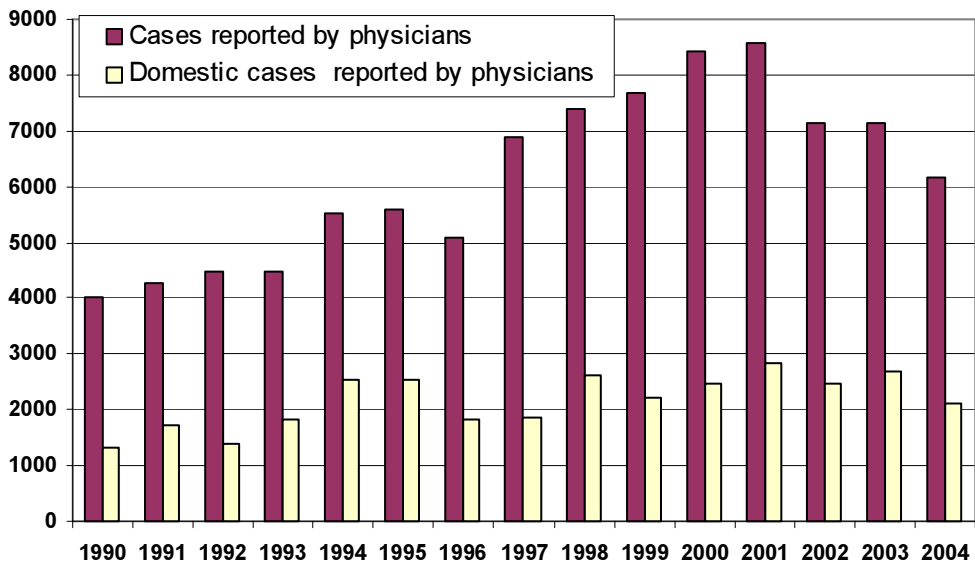
**Fig 1.14. Salmonella control of crushed meat/meat scrapings (poultry)  
at cutting plants supervised by NFA**



**Fig 2.1. Percent campylobacter positive broiler flocks at slaughter, 1992-2004**



**Fig 2. 2. Number of notified cases of campylobacteriosis in humans, 1990-2004**



**Fig 3. Number of cases of listeriosis in humans notified by physicians, 1997-2004**

