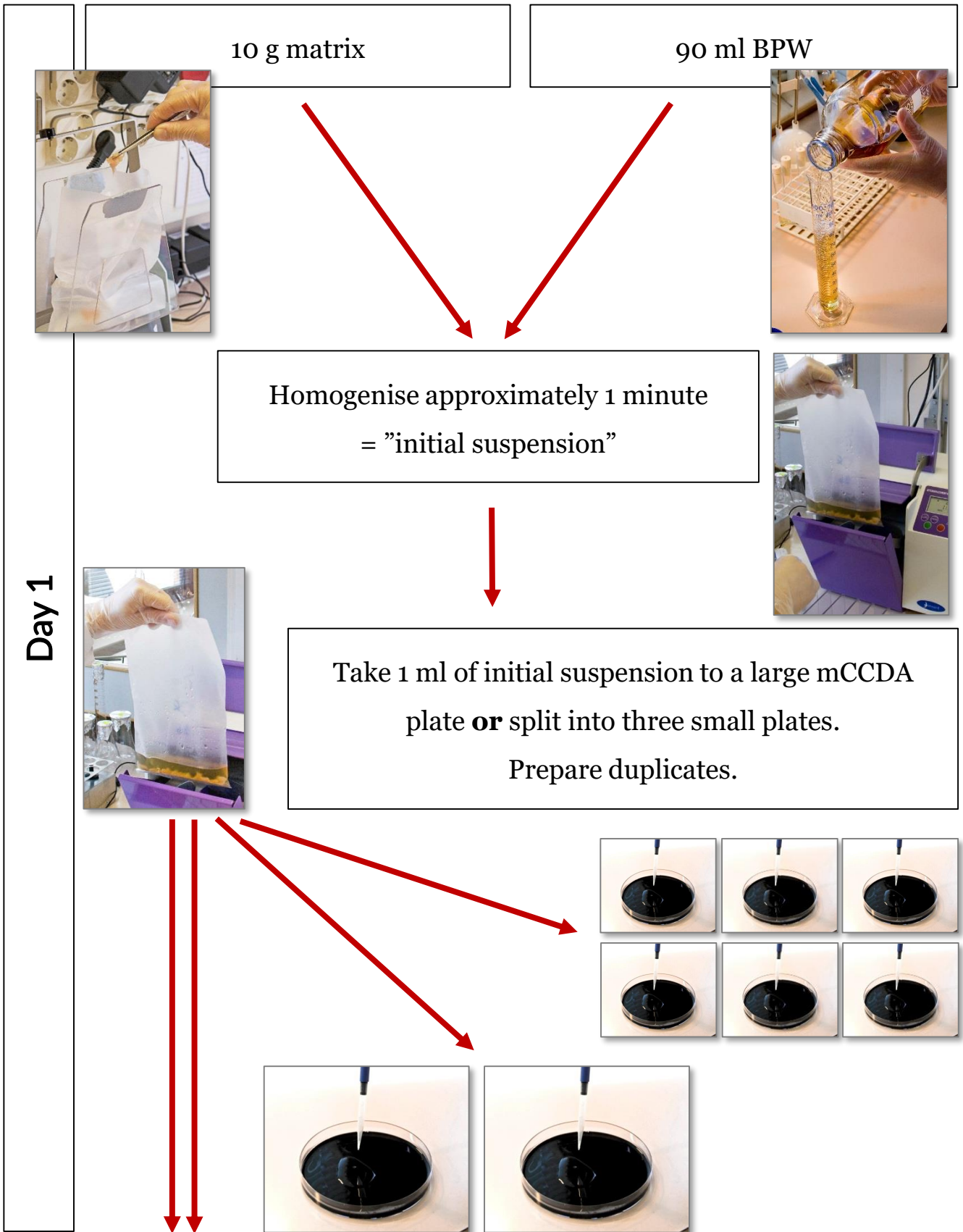
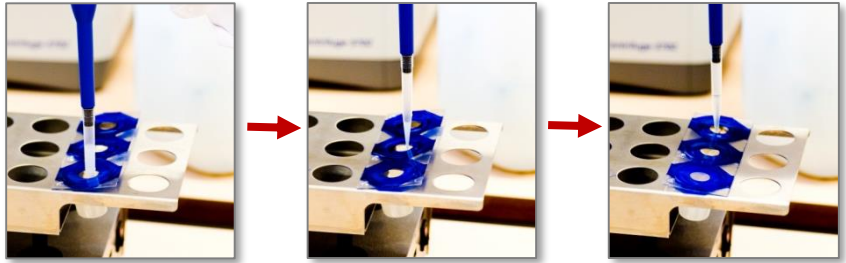


# Enumeration

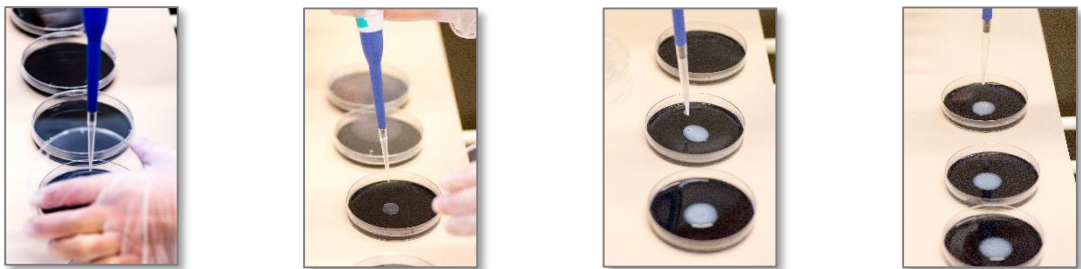


Day 1

Make a 1/10 dilution series starting from initial suspension.



Transfer 0,1 ml of initial dilution and further dilutions to one mCCDA plate/dilution.



Spread the liquid over the agar plates.



Incubate all plates at  $41.5 \pm 1^\circ\text{C}$  in microaerobic atmosphere for  $44 \pm 4$  h.

Day 3

**Examine the plates;** Select the plates containing less than 150 typical or suspect colonies; count these colonies and record their number as presumptive colonies per dish.



Typical colonies are grayish, often with a metallic sheen, flat, moist and a tendency to spread.

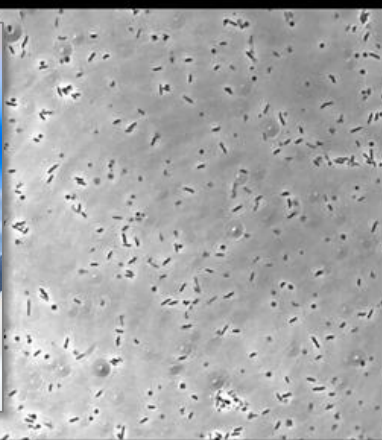
Choose at random 5 presumptive colonies for confirmation. Streak each of the selected colonies on blood agar



Incubate in microaerobic atmosphere at  $41.5 \pm 1^\circ\text{C}$  for 24-48h

**Confirmation; morphology and motility, aerobic growth 25° and oxidase or alternative tests**

Day 4



SVA

In the microscope the *Campylobacter* will look:

- curved (seagull wing shaped) or spiral shaped
- small motile rods (0.2-0.8 x 0.5-5 µm)
- spiralling corkscrew-lik motility



Day 5/6

If:  
morphology +  
motility +  
No aerobic growth 25°C  
oxidase +

If one of following is negative:  
morphology, motility, aerobic  
growth 25°C or oxidase.

Species identification

Not *Campylobacter*

This description of enumeration is according to ISO 10272:2 2017.

*Photo: Linda Svensson, EURL-Campylobacter/SVA*

